

Survival Guide

Ransomwhere are the Cybersecurity Experts? - An Intro to Cybersecurity by LBG Copenhagen

BEST COURSE IN SUMMER

27th of JUNE to 6th of JULY 2020

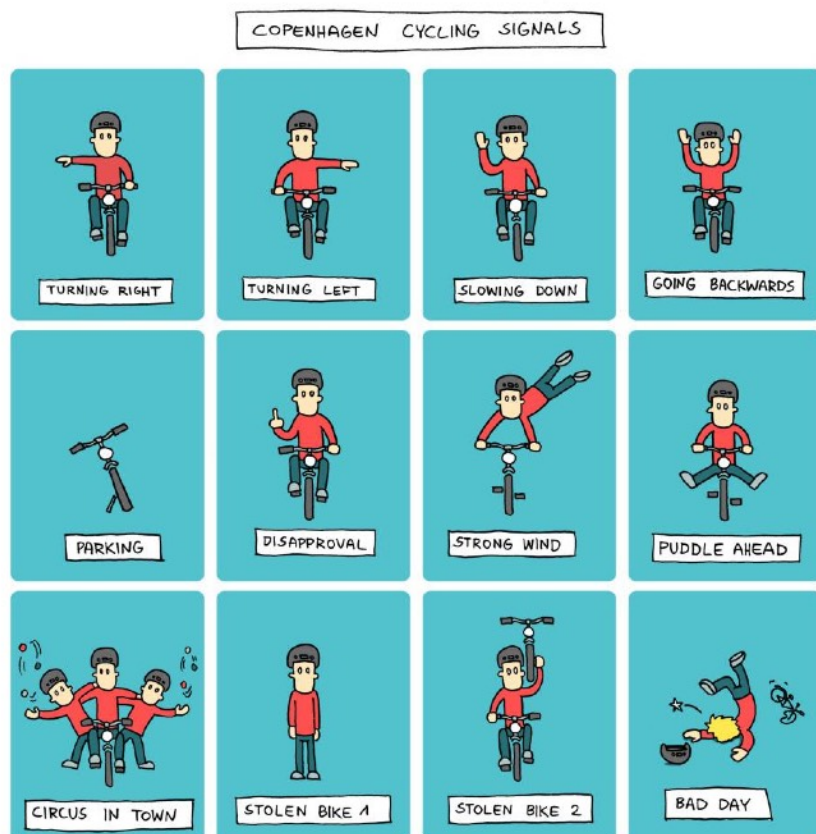


TABLE OF CONTENTS

1. Useful Info About Denmark
 - Population
 - Cities we will visit
 - Language
 - Timezone
 - Money
 - Electricity
 - Weather
 - Important phone numbers
2. Danish Culture
 - Food and Drinks
 - Language
3. The University
4. Getting Around Denmark
 - S-Train
 - Metro
 - Bus
5. Where We Will Stay
6. How To Get To Event Location
 - By Car
 - By Plane
7. What To Bring
8. Contact Information
 - Best Copenhagen

1. Useful Info About Denmark



Population:
 5.6 million people
Cities we will visit:
 Copenhagen, Lyngby, among others
Language:
 Danish but most people speak very good English
Timezone:
 CET (GMT+1) but careful, Danish people are very punctual!
Money:
 Danish Kroner (DKK) (1€ ≈ 7.5 DKK)

Prices examples	
Bottle of Coca-Cola (1.5L) in supermarket	20 DKK ≈ 3 €
Big Mac menu at McDonalds	50 DKK ≈ 7 €
Sandwich at the student cafeteria	22 DKK ≈ 3 €
Cheapest beer in supermarket (0.33L)	3.5 DKK ≈ 0.5 €
Bottle of beer in bar (0.33L)	30 DKK ≈ 4 €

Electricity

Danish was named happiest country in the world, maybe because of our super happy power outlets! Look at those happy faces!

It operates at 230 V at 50 Hz.



More info here <http://www.power-plugs-sockets.com/denmark/>

Weather

The weather can change from rain to sunshine in a matter of minutes so be prepared for all kind of weather and don't forget your raincoat or water-repellent jacket!

The weather forecast can be found here: <https://www.dmi.dk/danmark/>

Emergencies: **112**

Police: **114** (directs you to the nearest police station)

Taxi companies in Copenhagen: **+45 35 35 35** or **+45 32 51 51 51**

Important phone numbers

2. Danish Culture

Food and Drinks

The water is very clean in Denmark, Danes drink water directly from the tap.

Beer is very popular and Denmark is well known for its Carlsberg beer!

You might also get to try some Snaps!

Danish people are meat lovers, here are some Danish specialties:



For lunch, you can get a traditional smørrebrød: rye bread (very popular!) with various toppings.

Danish people tend to eat early compare to some other countries (lunch around 12:00 and dinner around 18:00).

Language

You might quickly notice that Danish is very hard to pronounce but it's fun (subjectively)!

English	Danish
Good morning/day/evening/night	God morgen/dag/aften/nat
Hello	Hej
Goodbye	Farvel
Yes/No	Ja/Nej
Thanks	Tak
Sorry/Excuse me	Undskyld
What's your name?/My name is...	Hvad hedder du?/Mit navn er..
Police station	Politi station
Train/Bus station	Tog/Bus station
Airport	Lufthavn
Arrival/Departure	Ankomst/Afgang

To / From	Til / fra
One beer please	En øl, tak
Ten shots of the BEST drink in Copenhagen	Ti shots citronsnaps
Cheers	Skål
I'm a little strawberry, eat me	Jeg er et lille jordbær, spis mig
I love you	Jeg elsker dig
Can I offer you a drink?	Må jeg byde på en drink?
Can I get your number?	Kan jeg få dit telefon nummer?

3. The University

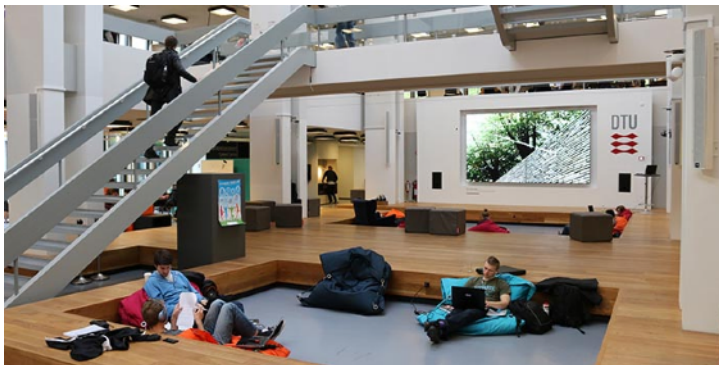
DTU (Danmarks Tekniske Universitet) is a leading technical university in Northern Europe with over 28 masters fields taught entirely in English and hundreds of specializations.

It has an incredible number of international students from all around the world!

Address of BEST Copenhagen at the university:

*BEST København
Polyteknisk Forening
Anker Engelundsvej 1
2800 Kgs. Lyngby*

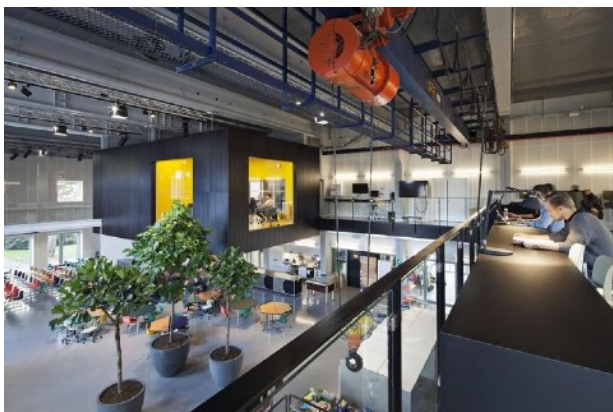
The Library/



Building 101



Skvlab



B101 Courtyard



A very ugly photo of the hallway in



4. Getting Around Denmark

CAUTION! Travelling without a valid ticket in Denmark = big fine (around 750 DKK/100 €)

Tickets are the same for busses, trains and metro and depend on how many zones you cross.

Don't hesitate to ask for help at the stations!

S-Train

To travel between Copenhagen and its outskirts (where the university is), s-trains are very practical!

Here below you can find a map of the s-trains in Copenhagen region.



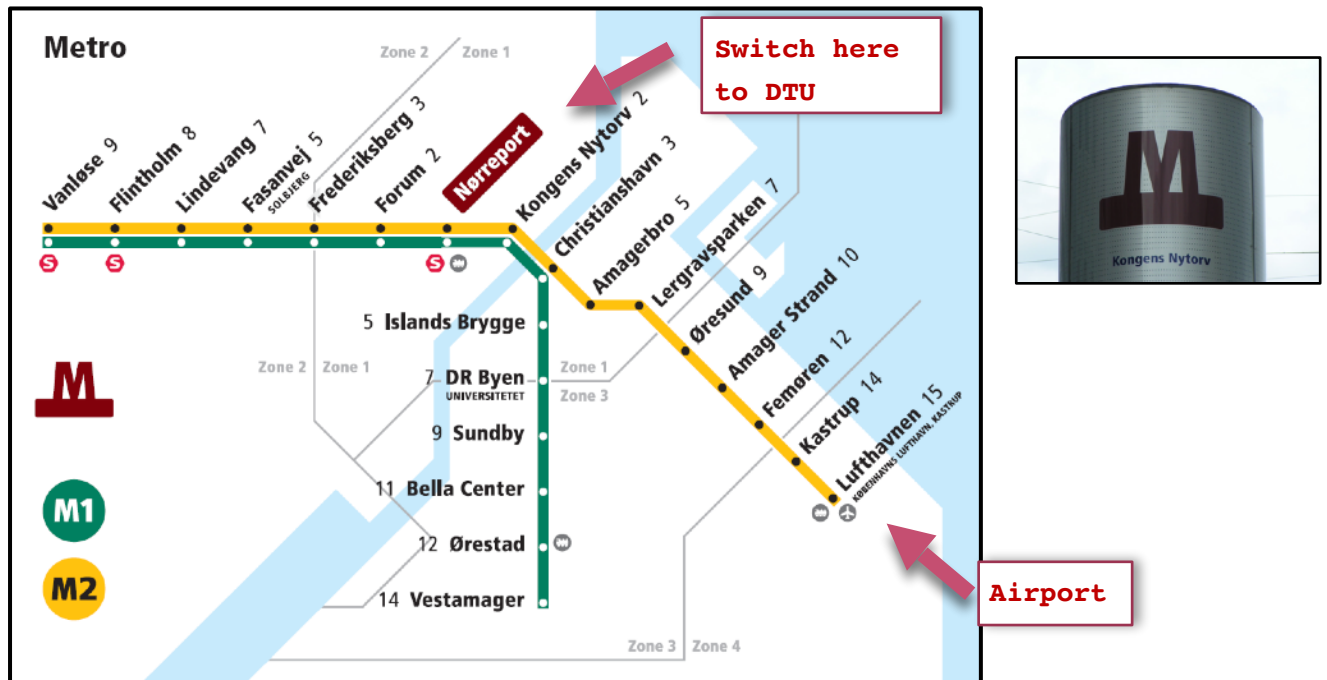
All stations are marked with the sign you see

Copenhagen central station is called "København H".

Metro

When travelling inside Copenhagen City and to the airport, the metro is very useful.

The metro stations are signaled by the sign you can find on the right



Bus

There are many busses travelling inside Copenhagen but also to its outskirts.

The list is too long to list here but we recommend you use either Google Map or Rejseplanen (www.rejseplanen.dk) to plan your trips.

5. Where We Will Stay

We will stay in a hostel, cabin or directly at the university. More information will follow.

6. How to get To Copenhagen

By Car

You can use the following Google map link to create a driving route:

<https://tinyurl.com/y78yafz6>

Just click the blue icon in the middle of the map, and select "to here" in the pop-up.

By Plane

The main airport in Denmark is Copenhagen Airport (CPH), called Kastrup, located around 25km from the city but easily accessible by metro.

Another close international airport is in Malmö (MMX). You might find cheaper flights to there, depending on your home country. From there it is only a 1.5h train ride to the central station in Copenhagen.

By Train/Bus

You will most likely arrive at Copenhagen Central Station also called Kobenhavn Hovedbanegard or Kobenhavn H.

7. How to get To the Event Location

To get to DTU from:

- **The airport:** you will first need to get to **Nørreport station** by metro (M2).
- **Nørreport station** - you can take the bus 150S towards Kokkedal (and **stop at Rævehøjvej, DTU station**). We will pick you up from there, as it's very close to the university :)
- **Copenhagen Central Station** - you will need to take the train to **Lyngby station** (either with the B train in the direction Holte or with the E train in the direction Hillerød)
- **Lyngby station** - you will need to take one of the following buses:
 - o **300S** towards Gl. Holte Øverødvej or Nærum station, stop at **DTU(Anker Engelunds Vej)**
 - o **190** towards Holte station, stop at **DTU Bygning 404 (Nils Koppels Allé)**

8. What To Bring

- ✓ Passport or national ID if you're from Europe
- ✓ VISA if needed (contact the BEST group of your university to know if you need one)
- ✓ Travel/health insurance
- ✓ This survival guide (with the organizers contact info)
- ✓ Student ID
- ✓ Medicine if you need any
- ✓ Money (Danish currency if you can, but most places accept credit cards/Visa)
- ✓ A towel, toothbrush and other toilet accessories (shampoo, shavers, ...)
- ✓ A bed sheet to cover the mattress, a pillow if you want one and a sleeping bag
- ✓ Clothes, including warm clothes, raincoat or water repellent jacket, pair of extra shoes!
- ✓ Swim suit
- ✓ Some formal clothes for the official reception
- ✓ Some food and drinks from your country for the international evening
- ✓ Paper and pens to take notes
- ✓ A laptop if you have one

9. Contact Information

Best Copenhagen

copenhagen@best.eu.org

Zoey McKinley

mckinleyzoey@gmail.com